

ANNABERG XXI

BADEN-BADEN

VILLA 3

APARTMENT N° 3.1-3.3







VILLA 3  
APARTMENT N° 3.1-3.3

- KITCHEN
- LOUNGE
- PRIMARY BEDROOM



GROUND FLOOR

VILLA 3  
APARTMENT N° 3.1

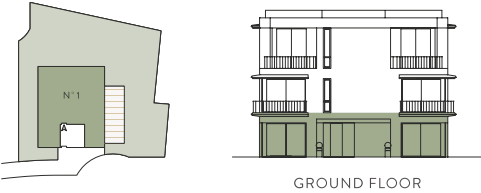


ENTRANCE HALL	24.84 SQ M
KITCHEN / LIVING AREA	72.59 SQ M
UTILITY	4.31 SQ M
MASTER BEDROOM	19.38 SQ M
MASTER BATHROOM	9.74 SQ M
DRESSING AREA	12.18 SQ M
2ND BEDROOM	20.14 SQ M
2ND BATHROOM	4.74 SQ M
3RD BEDROOM	17.93 SQ M
3RD BATHROOM	5.14 SQ M
CORRIDOR	3.05 SQ M
GUEST WC	3.66 SQ M
TERRACE	54.5 SQ M
PRIVATE GARDEN	240.0 SQ M



INTERIOR AREA  
197.70 SQM

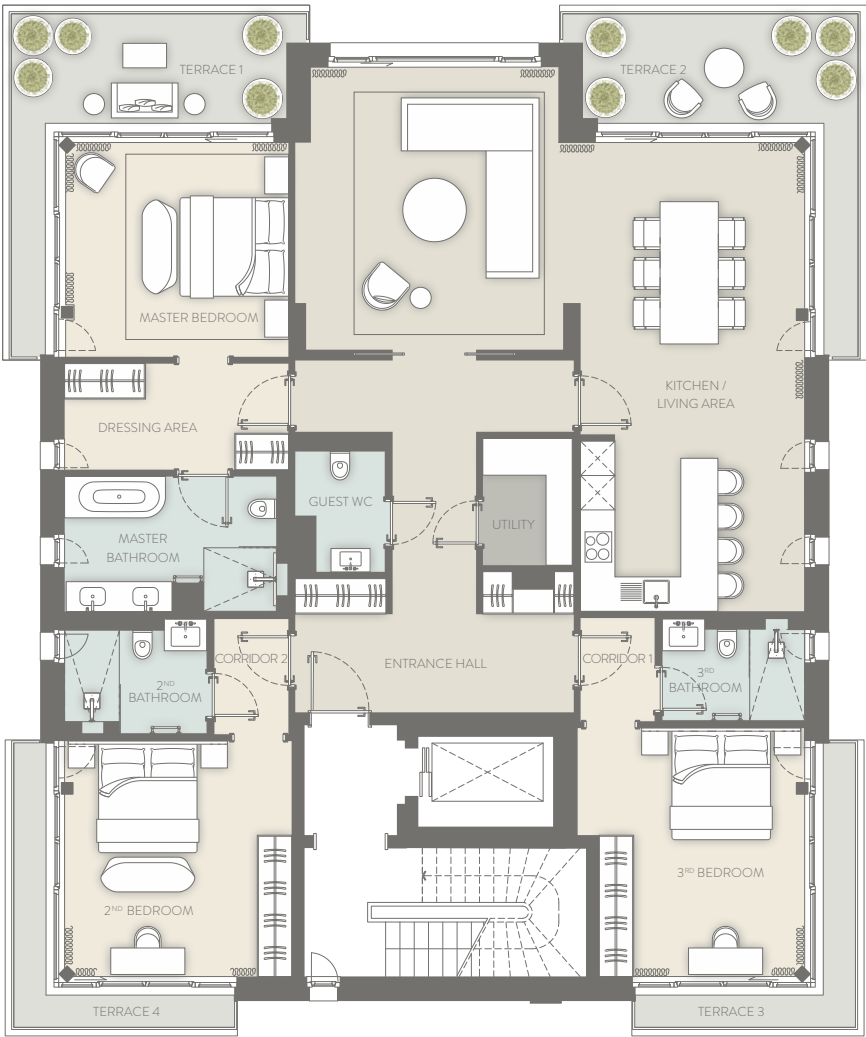
EXTERIOR AREA  
294.5 SQM





FIRST FLOOR

VILLA 3  
APARTMENT N° 3.2



ENTRANCE HALL	24.50 SQ M
KITCHEN / LIVING AREA	64.50 SQ M
UTILITY	4.05 SQ M
MASTER BEDROOM	17.11 SQ M
MASTER BATHROOM	9.70 SQ M
DRESSING AREA	8.40 SQ M
2 <sup>ND</sup> BEDROOM	19.10 SQ M
2 <sup>ND</sup> BATHROOM	5.10 SQ M
3 <sup>RD</sup> BEDROOM	19.00 SQ M
3 <sup>RD</sup> BATHROOM	4.73 SQ M
CORRIDOR 1	2.74 SQ M
CORRIDOR 2	3.10 SQ M
GUEST WC	3.36 SQ M
TERRACE 1	13.82 SQ M
TERRACE 2	13.82 SQ M
TERRACE 3	5.45 SQ M
TERRACE 4	5.45 SQ M



INTERIOR AREA  
185.35 SQM

EXTERIOR AREA  
38.54 SQM

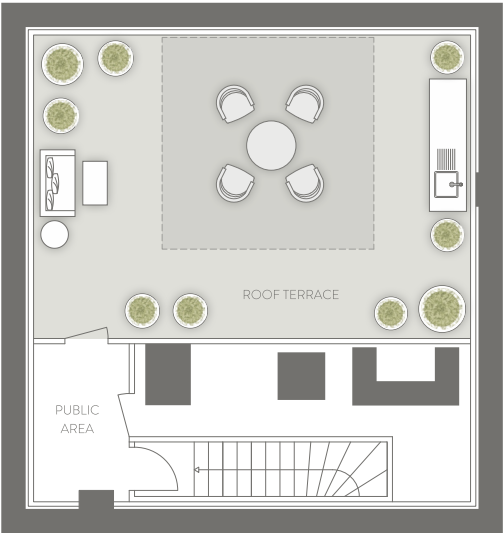
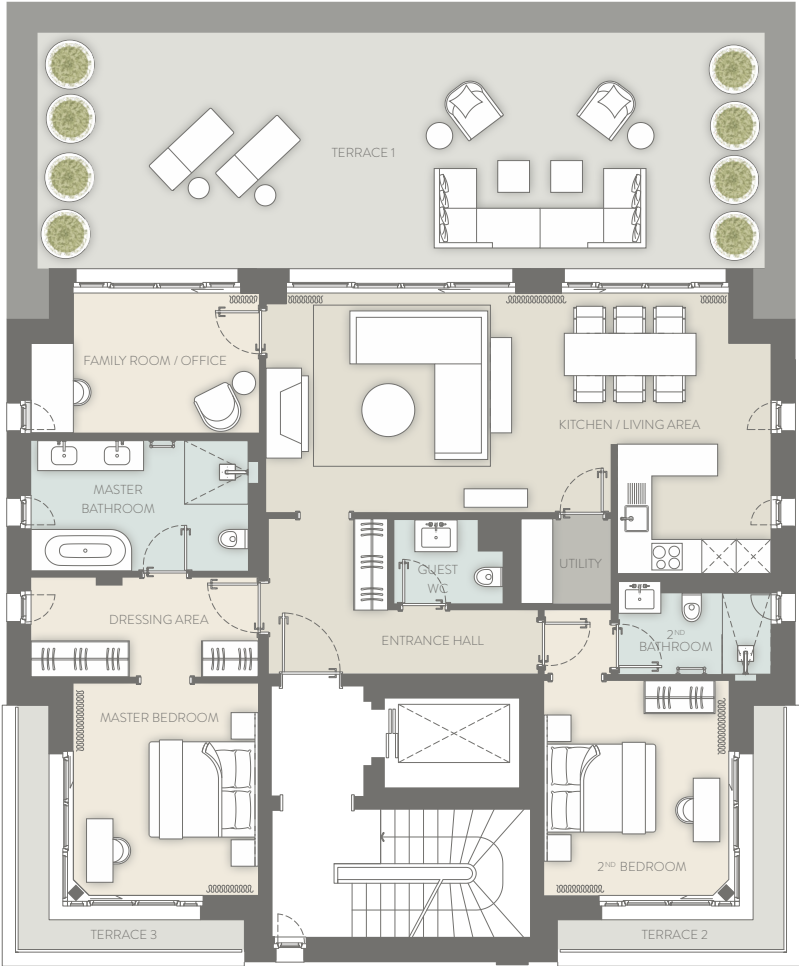




SECOND FLOOR

VILLA 3  
APARTMENT N° 3.3

ENTRANCE HALL	9.98 SQ M
KITCHEN / LIVING AREA	41.57 SQ M
UTILITY	2.71 SQ M
MASTER BEDROOM	13.83 SQ M
MASTER BATHROOM	10.10 SQ M
DRESSING AREA	7.94 SQ M
2 <sup>ND</sup> BEDROOM	15.54 SQ M
2 <sup>ND</sup> BATHROOM	4.37 SQ M
FAMILY ROOM / OFFICE	10.53 SQ M
GUEST WC	2.88 SQ M
TERRACE 1	60.00 SQ M
TERRACE 2	5.00 SQ M
TERRACE 3	5.00 SQ M
ROOF TERRACE	46.00 0 SQ M



ROOF TERRACE



INTERIOR AREA  
119.45 SQM

EXTERIOR AREA  
116.0 SQM





A DEVELOPMENT BY

**B/G** BRISEN GROUP

[www.brisengroup.com](http://www.brisengroup.com)

This plan is for illustrative purposes only and should be used as such by any prospective purchaser. Whilst every attempt has been made to ensure the accuracy of the floor plans, measurements of doors, windows, rooms, and any other item are approximate, and no responsibility is taken by the developer for any unintentional error, omission, or misstatement. These images show items of furniture, fittings or other elements of specification that may not be included with the sale of property and do not form part of a sale contract, which are intended to give potential purchasers an indication of how the property might look when furnished. It should be noted that residences under development are subject to municipal building regulations as well as mechanical, electrical and plumbing (MEP) adaptations, and elements of detail included are intended to give an indication of the general style of the product (e.g. materials, floorplans, MEP, specifications, positioning of furnishings and fittings) and may be subject to change without notice. Whilst floor areas and dimensions are provided for guidance, the floor plans are produced to scale from the architect's plans to provide a general overview of the layout of the properties.