

ANNABERG XXI

BADEN-BADEN

# VILLA 6

APARTMENT N° 6.1-6.3

DESIGNED BY O&O BAUKUNST







VILLA 6  
APARTMENT N° 6.1-6.3

- KITCHEN
- LOUNGE
- PRIMARY BEDROOM



GROUND FLOOR

VILLA 6  
APARTMENT N° 6.1

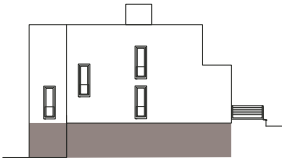
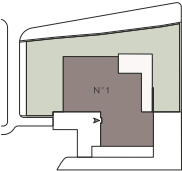


ENTRANCE HALL	28.0 SQ M
KITCHEN	48.0 SQ M
LIVING AREA	40.9 SQ M
UTILITY	7.4 SQ M
MASTER BEDROOM	21.6 SQ M
MASTER BATHROOM	11.5 SQ M
DRESSING AREA	7.2 SQ M
2 <sup>ND</sup> BEDROOM	18.6 SQ M
2 <sup>ND</sup> BATHROOM	15.0 SQ M
DRESSING AREA 2	14.6 SQ M
3 <sup>RD</sup> BEDROOM	15.2 SQ M
3 <sup>RD</sup> BATHROOM	7.3 SQ M
DRESSING AREA 3	6.5 SQ M
GUEST WC	3.5 SQ M
TERRACE	61.6 SQ M
PRIVATE GARDEN	290.0 SQ M



INTERIOR AREA  
245.3 SQM

EXTERIOR AREA  
351.6 SQM



GROUND FLOOR



FIRST FLOOR

VILLA 6  
APARTMENT N° 6.2

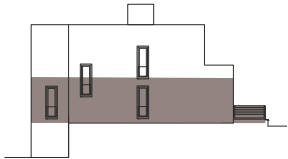
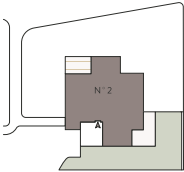


ENTRANCE HALL	15.7 SQ M
KITCHEN	26.6 SQ M
LIVING AREA	76.8 SQ M
UTILITY	7.9 SQ M
MASTER BEDROOM	21.9 SQ M
MASTER BATHROOM	10.2 SQ M
DRESSING AREA	8.0 SQ M
2 <sup>ND</sup> BEDROOM	20.1 SQ M
2 <sup>ND</sup> BATHROOM	8.2 SQ M
DRESSING AREA 2	5.5 SQ M
3 <sup>RD</sup> BEDROOM	20.6 SQ M
3 <sup>RD</sup> BATHROOM	4.5 SQ M
GUEST WC	3.1 SQ M
TERRACE 1	22.7 SQ M
TERRACE 2	19.0 SQ M
PRIVATE GARDEN	175.0 SQ M



INTERIOR AREA  
228.8 SQM

EXTERIOR AREA  
216.7 SQM



1<sup>ST</sup> FLOOR

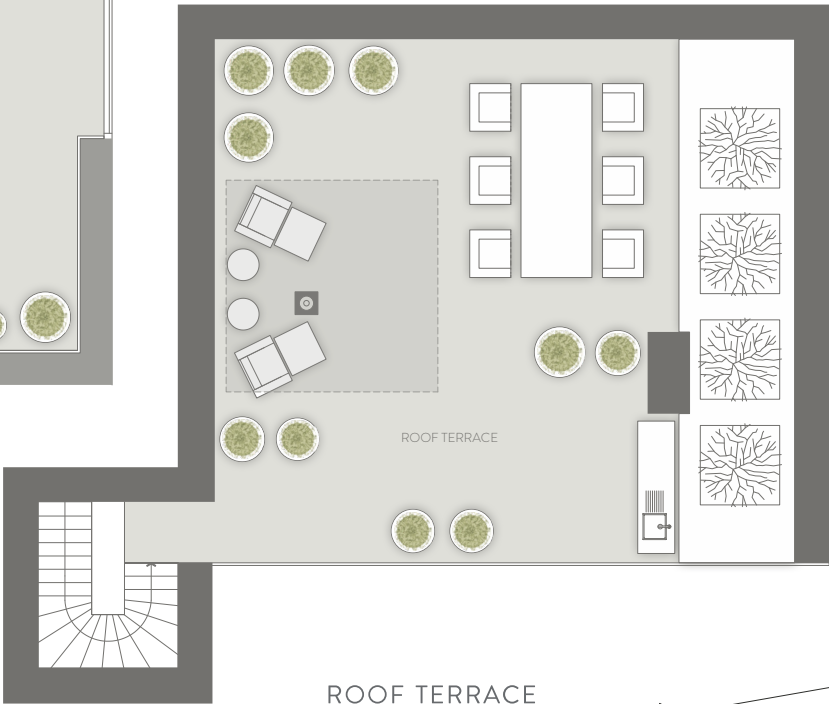


SECOND FLOOR



VILLA 6  
APARTMENT N° 6.3

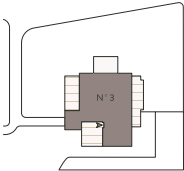
ENTRANCE HALL	17.6 SQ M
KITCHEN/LIVING AREA	54.9 SQ M
UTILITY	1.7 SQ M
MASTER BEDROOM	22.4 SQ M
MASTER BATHROOM	10.4 SQ M
DRESSING AREA	8.4 SQ M
2 <sup>ND</sup> BEDROOM	15.4 SQ M
2 <sup>ND</sup> BATHROOM	4.0 SQ M
GUEST WC	1.4 SQ M
STORAGE	3.2 SQ M
OUTSIDE STORAGE	4.3 SQ M
TERRACE 1	20.3 SQ M
TERRACE 2	27.4 SQ M
TERRACE 3	25.4 SQ M
ROOF TERRACE	84.0 SQ M



INTERIOR AREA  
143.6 SQM

EXTERIOR AREA  
157.1 SQM

ROOF TERRACE



2<sup>ND</sup> FLOOR / ROOF TERRACE



A DEVELOPMENT BY



BRISEN GROUP

[www.brisengroup.com](http://www.brisengroup.com)

This plan is for illustrative purposes only and should be used as such by any prospective purchaser. Whilst every attempt has been made to ensure the accuracy of the floor plans, measurements of doors, windows, rooms, and any other item are approximate, and no responsibility is taken by the developer for any unintentional error, omission, or misstatement. These images show items of furniture, fittings or other elements of specification that may not be included with the sale of property and do not form part of a sale contract, which are intended to give potential purchasers an indication of how the property might look when furnished. It should be noted that residences under development are subject to municipal building regulations as well as mechanical, electrical and plumbing (MEP) adaptations, and elements of detail included are intended to give an indication of the general style of the product (e.g. materials, floorplans, MEP, specifications, positioning of furnishings and fittings) and may be subject to change without notice. Whilst floor areas and dimensions are provided for guidance, the floor plans are produced to scale from the architect's plans to provide a general overview of the layout of the properties.